

1st
STAGE 

The Nance

April 4 - April 21, 2024



1st Stage
With generous support from

Sandy Laeser, in honor of Dick Laeser
Presents

The Nance

WRITTEN BY
DOUGLAS CARTER BEANE

DIRECTED BY
NICK OLCOTT

Featuring

DAY AJOSE
JOAN

SALLY HORTON IMBRIANO
CARMEN

PATRICK JOY
NED

NATALIE CUTCHER
SYLVIE

MICHAEL INNOCENTI
EFRAM

MICHAEL RUSSOTTO*
CHAUNCEY

Production & Design

CHOREOGRAPHY
JENNIFER HOPKINS

LIGHTING DESIGN
ALBERTO SEGARRA+

PROPS DESIGN
PAULINE LAMB

STAGE MANAGER
SARAH USARY

SOUND DESIGN
NEIL MCFADDEN

MUSIC DIRECTOR
JOE WALSH

COSTUME DESIGN
KENDRA RAI+

ASSISTANT COSTUME DESIGN
KASEY BROWN

INTIMACY COORDINATOR
LORRAINE RESSEGGER-SLONE

ASSISTANT DIRECTOR
OLIVIA MARTIN

SCENIC DESIGN
JONATHAN DAHM ROBERTSON+

ASSOCIATE ARTISTIC DIRECTOR
DEIDRA LAWAN STARNES

ARTISTIC DIRECTOR
ALEX LEVY

This production is made possible in part by gifts from
our generous 1st Stage donors and with the support of



* Member of Actors' Equity Association, the Union of Professional Actors and Stage Managers in the United States, appearing under a Special Appearance Contract.
+ Member, United Scenic Artists, Local USA 829

The Creators

The Playwright



DOUGLAS CARTER BEANE was Artistic Director for Drama Dept. at the Greenwich House for ten years. As director/writer his current projects include the musical *Hood* (score by Lewis Flinn, Dallas Theater Center), Noel Coward's *Me and The Girls* (reading at Roundabout, being developed for Michael Urie), *Star-Spangled* (score by Lewis Flinn, workshopped at the Vineyard), *To Wong Foo* (score by Lewis Flinn), *The Big Time* (score by Douglas J. Cohen, concert at McCarter Theatre Center with Santino Fontana), and Rodgers and Hart's *Babes in Arms*.

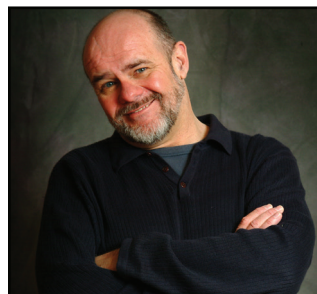
As a sole playwright/librettist, he has earned five Tony nominations and one Olivier nomination. Beane's plays are *The Little Dog Laughed*, *As Bees in Honey Drown*, *The Nance*, *Shows For Days*, *Music From A Sparkling Planet*, *The Country Club*, *Advice From A Caterpillar* and *The Cartells*. His musicals are Rodgers + Hammerstein's *Cinderella*, *Lysistrata Jones*, *Sister Act* and *Xanadu*.

He has written the libretto for the Metropolitan Opera's *Die Fledermaus*, which is currently in their repertory, and the summer show at Radio City Music Hall.

He wrote the film adaptation of his play *Advice From A Caterpillar*, as well as the screenplay of *To Wong Foo, Thanks For Everything, Julie Newmar*. He resides in New York City with his husband, composer Lewis Flinn, and their son, Cooper, and daughter, Gabrielle.

The Director

NICK OLCOTT is happy and grateful to be back at 1st Stage, where he previously directed *Floyd Collins* and *My Name is Asher Lev*. His theatre credits include productions at Arena Stage, the Round House Theatre, the Kennedy Center, Theater J, Constellation Theatre Company, Washington Jewish Theatre, Imagination Stage, Adventure Theatre, and the Washington Stage Guild. His musical marriage of Arthur Conan Doyle to Gilbert and Sullivan, *Sherlock Holmes and the Case of the Purloined Patience*, received the 1998 MacArthur Award for Outstanding New Play from the Helen Hayes Awards. He has been nominated for Helen Hayes Awards three times as writer, twice as actor, twice as director, and once as choreographer. His opera credits include Wolf Trap Opera, Boston Lyric Opera, Cleveland Opera, Lincoln Center, the Kennedy Center, and the Opéra Royal (Versailles). Many thanks to Alex, the cast, and 1st Stage for believing in this play.



LOVE 1ST STAGE?

Volunteering is an incredible way to help the theatre and create community.
Join us as a volunteer at 1stStage.org/volunteer



THE BORO®
TYSONS

A Place for EVERYTHING



theborotysons.com



@theborotysons



Tysons Realty Inc.

PAULINE THOMPSON

Founder, President, CEO

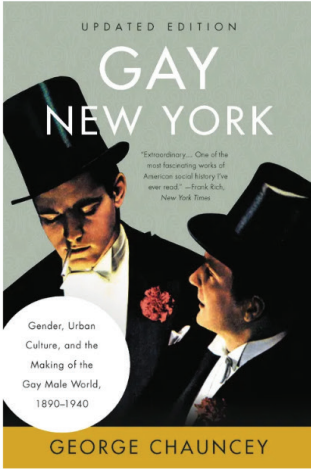
8321 Old Courthouse Road -140
Tysons Corner, VA 22182

Off. 703-893-5700
Cell: 703-599-1488
Fax: 703-893-6859

EM: TYSONSREALTY@AOL.COM

Retail, Office, Industrial, Apts. Asset Mgt.

The Not So Secret World of The Nance



Douglas Carter Beane drew a large amount of inspiration for *The Nance* from George Chauncey's book *Gay New York: Gender, Urban Culture, and The Making of the Gay Male World, 1890 - 1940*. The book was so influential to Beane that he named his main character Chauncey, in honor of the author.

Gay New York dispels the myth that gay men in New York led invisible lives before the 1969 Stonewall riots. "Most queer men led a double life," says Chauncey, "but it did not necessarily lead them to denigrate their necessarily compartmentalized gay persona."

As the Depression steamrolled through the country, the clubs of Times Square turned to more lewd burlesque shows in an attempt to draw in customers. With these burlesque shows rose the popularity of "Pansy acts," entertainers who were exhibiting a "camp gay style" on stage. The "Pansy Craze" was so popular that, "Times Square entrepreneurs began to evoke the flamboyant image of the pansy to generate business."



Gene (Jean) Malin, one of the first openly gay "Pansy" performers, 1930s.



Jean Malin and friends Pat DiCicco, Thelma Todd and Lois Wilson at the club New York in Hollywood.

"Pansie's' Stage Colorful Ball," Baltimore Afro-American; Mar 21, 1931.



The Cast



DAY AJOSE (JOAN) is an actress, voice-over artist, director, and writer. She has a B.A. from the University of Southern California in Theatre and Performance with a minor in Screenwriting. A major part of her artistic development started with being a performer for the Taratibu Youth Association, a DMV-based youth performing arts company rooted in African/African American culture and history, which utilized traditional and contemporary arts, written expression, and movement aimed at fostering positive community transformation. She is excited to be making her 1st Stage debut. She has appeared in *The Merchant of Venice* (Duke Ellington School of the Arts); *Maxwell Grand Final* (Brand New Theatre); *Eurydice* (Aeneid Theatre Company) *A Winter's Tale* and *A Mouthful of Birds* (British American Drama Academy); and *We, the Invisibles* (USC School of Dramatic Arts). Her directing credits include *Confessions of a Former Boy Detective* for the Hollywood Fringe Festival.

NATALIE CUTCHER (SYLVIE) was previously seen onstage as the ranting and raving mermaid Hexi in 1st Stage's *Under the Sea with Dredgie McGee* (HH nomination for Outstanding Ensemble). Other local collaborators include: Constellation (recent HH nomination for Outstanding Ensemble - *The School for Lies*), Folger, Syntetic, Faction of Fools, Theater Alliance, So-las Nua, Prologue, We Happy Few, Rorschach, Flying V, Avant Bard, Arts on the Horizon (co-wrote and directed HH nominated TYA Production, *Squeakers and Mr. Gumdrop*). Education: MFA in Classical Acting with STC at GW, Muhlenberg College, and Accademia dell'Arte in Italy. Sci-Fi Podcast: *EOS 10* - all five seasons. Up next: Jen Silverman's *The Moors* and ongoing tours of *A Commedia Romeo and Juliet* with Faction of Fools.



SALLY IMBRIANO (CARMEN, SHE/HERS) is thrilled to make her 1st Stage debut in *The Nance!* DC AREA: *Lucky Stiff* (Annabel Glick) [Helen Hayes Nomination for Outstanding Lead Performer], *Matilda* (Nextstop Theatre Company); *Brothers Paranormal* (Olney Theatre Center); *Heartland* (Pipeline Playwrights); *The Dragon King's Daughter*, *The Mortification of Fovea Munson*, *Don't Let the Pigeon Drive the Bus* (Kennedy Center TYA); *Working, Always...Patsy Cline* (Patsy), *Disenchanted! The Musical* [HHN for Best Ensemble] (Creative Cauldron); *Seussical* [HHN for Best Ensemble] (Keegan Theatre); *Winnie the Pooh, Alexander and the Terrible Horrible No Good Very Bad Day* (Adventure Theatre MTC); *New Kid* (Imagination Stage). INTERNATIONAL: *Company* (Amy, Richard Burton Theatre Company); *The Last Queen of Paradise* (Queen Liliuokalani, Going for Gold Festival); *Fleeced! The Musical* (Edinburgh Fringe Festival). EDUCATION: MA Musical Theatre from The Royal Welsh College of Music and Drama; BM from The University of New South Wales Sydney. Sally frequently creates and performs in cabarets, and she teaches voice in the DMV. Unbounded thanks to her coach and confidante, Jane. Up next: *Bubbly Black Girl Sheds Her Chameleon Skin* at Creative Cauldron. @sallyimbriano. sallyimbriano.com.



DID YOU KNOW?

1st Stage offers 5 complimentary artist tickets each performance.

1st come, 1st serve.

Use the code **ARTIST** at check out to get your ticket!

The Cast



MICHAEL INNOCENTI (EFRAM) is making his 1st Stage debut. He has been associated with The Keegan Theatre for 20 years as an actor, director, and designer having worked on close to 100 productions. In 2018, Michael won the Helen Hayes Award for Outstanding Lead Actor in a Musical for his performance as Leo Frank in Parade. Select acting credits at Keegan include: *Suessical* (HH nom. – Lead Actor in a Musical), *The Outsider* (HH nom. – Supporting Actor in a Play, HH Award - Outstanding Ensemble), *Yoga Play*, *Chicago* (HH nom. - Supporting Actor in a Musical), *The Baltimore Waltz*, *What We're Up Against*, *An American Daughter*, *A Few Good Men*, *The 25th Annual Putnam County Spelling Bee*, *August: Osage County*, *The Full Monty*, *Man of La Mancha*, *Glengarry Glen Ross* (US/Ireland Tour), and *Death of a Salesman* (US/Ireland Tour). Directing Credits: *Cabaret* (Four HH noms. including Best Musical), *The Sunshine Boys*, and *Dogfight*. "All my love to Vivi and Benny."

PATRICK JOY (NED) is delighted to be back at 1st Stage! Previous credits at 1st Stage include *The Last Match* (Tim/Sergei u/s) and *columbinus* (Dylan Klebold, Helen Hayes nomination). Other credits: *A Misanthrope* (Avant Bard); *Six Degrees of Separation* and *Rabbit Hole* (Keegan Theatre); *In the Closet* (Rainbow Theatre Project); *Electra* (4615 Theatre); *Proof* (Peter's Alley). He holds a B.A. in Theatre and a B.S. in Physics from the University of Maryland. All his love to Emma Lou, for loving all of him, and for making his life beautiful. PatrickJoyActor.com



MICHAEL RUSSOTTO (CHAUNCEY) is delighted to make his 1st Stage Debut with *The Nance*, and to be reunited with old friend, Director Nick Olcott. Most recently Michael toured Michigan in *Tuesdays With Morrie* (Morrie) for the 25th anniversary author-sponsored tour of Mitch Albom's wonderful play. Prior to that he performed the same role in the Theater J production (Washington, DC). Other recent credits include the world premiere of *The Joy That Carries You* (Martin, Olney Theatre Center) and *My Lord What a Night* (Abraham Flexner, Ford's Theatre). Additional regional credits include shows at Cleveland Play House, The Kennedy Center, Arena Stage, Signature Theatre, Round House Theatre, and The Folger Shakespeare Theatre. Michael is a member of the Woolly Mammoth Theatre Company. He has received numerous Helen Hayes Award nominations for performances in the DC area. Film and television work includes *Playing Through*, *The Battle of Bloody Lane*, and *Death of a Nation*. Michael can be heard on the L.A. Theatre Works recording of *Seven Days in May*, with Ed Asner (directed by Nick Olcott!). He has also narrated hundreds of audio books for Books on Tape and The Library of Congress.



COMMUNITY CONVERSATIONS

Connecting our community through artwork, stories, and conversation.

Following the 2pm Performance

4/6/24: Meet the Design Team

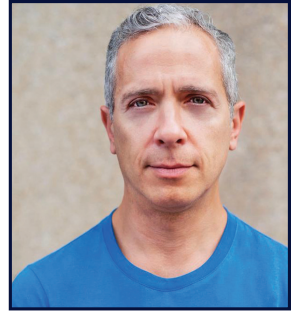
4/13/24: Meet the Cast

4/7/24: Meet the Director

4/20/24: Meet The Director of the
Burlesque Hall of Fame (ZOOM)

The Cast

JOE CREA (U/S CHAUNCEY) is delighted to be making his 1st Stage debut. Recent local credits: *Romeo & Juliet* (Friar Lawrence) at NOVA Nightsky Theater. Upcoming credits *A Midsummer Night's Dream* (Oberon and Egeus) at Prince George's County Shakespeare in the Parks. Joe received his BA in Theater from Goucher College in Baltimore and studied at the American Conservatory Theater in San Francisco and the Stella Adler Studio of Acting in New York City. Joe's a graduate and serves on the board of Studio Acting Conservatory in Washington, DC.



DYLAN ARREDONDO (U/S NED, EFRAM) 1st Stage debut. DC AREA: *Lend Me a Soprano*, *Fiddler on the Roof*, *West Side Story in Concert*, *Beauty & the Beast*, *The Great Gatsby*, Alice in Wonderland, *Othello* (Olney Theatre Center); *The Mortification of Fovea Munson* (The Kennedy Center); *Quixote Nuevo* (Round House Theatre); *Daphne's Dive* (Signature Theatre); *The Glass Menagerie* (Rep Stage); *As You Like It*, *Much Ado About Nothing* (Chesapeake Shakespeare Company); *School for Lies*, *White Snake* (Constellation Theatre Company); *Decameron*, *Phantom of the Opera*, *Snow Queen* (Synetic Theater); *Reykjavik* (Rorschach Theatre); *Lady from the Village of Falling Flowers* (Spooky Action Theater). Upcoming: *Frontières Sans Frontières* at Spooky Action. www.DylanArredondo.com

EMILY H. GILSON (U/S JOAN) is an actor, singer, teaching artist, and DC native thrilled to be making her 1st Stage debut! Recent work: *Songbird* (Washington National Opera); Soloist, LaTiDo DC/NoVA; *Winterfest* (Adventure Theatre MTC); *Miss Bennet* (Strand Theater Company); *Other Desert Cities* (Peace Mountain Theatre Company); Tabletop Broadway NYC cabaret series; The UK-based, Digital Stage Award-nominated *The Show Must Go Online (Richard II)*; Source Festival; *The Tempest* (Avant Bard); Quotidian Theatre Company; and *In the Next Room* (Silver Spring Stage). Emily is a company member of the Maryland Renaissance Festival Acting Company and a resident voice actor with Jabberwocky Audio Theater (last heard in *Quorum: The Gambler's Tale*). She also has a YA audiobook, *Time to Live: Inheritance of Time Vol 1*, available at Audible. Film: *Rustin* (Netflix, dir. George C. Wolfe); *Pen Pals*; Silent Sentinel. Training: BA Theatre/Medieval Studies: SUNY Purchase; Studio Theatre Acting Conservatory; Shakespeare & Company; Shaw Festival; Musical Theatre/Opera: Dan Thaler Voice Studio. Proudly SAG-AFTRA strong! www.emilygilsonactor.com. For JRHR: L'chaim.



GABBY WOLFE (SHE/HER/ELLA) (U/S SYLVIE/CARMEN) Gabby is an actor and playwright in Washington D.C., and also works in marketing at Studio Theatre. Select credits include: *Kill the Ripper*, *Desdemona: A Play about a Handkerchief*, *La Llorona*, *Lover's Vows* (We Happy Few); *Sonnets for an Old Century* (Spooky Action Theatre); *The Dinner Party* (Studio Theatre); *The Burn* (The Hub Theatre) *Tinkerbell* (understudy) (Adventure Theatre); and *Romeo & Juliet* (Chesapeake Shakespeare Company). Prior to moving to D.C she toured with VA Rep on Tour, and performed with the Virginia Shakespeare Festival in *The Tempest* as Miranda. Awards: Helen Hayes Nomination for Outstanding Performer in a Play. Gabby is a recipient of DCAH FY24 Fellowship, and was a Local Theatre Artist in Residence at The Reach at the Kennedy Center. gabbyrwolfe.com.

The Production Team

KASEY BROWN (COSTUME DESIGN ASSISTANT) Kasey Brown is currently in her final year as a MFA Candidate for costume design at Virginia Commonwealth University. She has been assisting Kendra the last few years on shows such as *Kinky Boots* at Olney Theatre, and *Once on this Island* at Constellation Theatre! Her recent design work includes *Something Rotten!* at Dogwood Dell. She is currently assisting on *Beautiful: the Carole King Story* at Olney Theatre! This is her first time working at 1st Stage and she has absolutely loved it!

JENNIFER J. HOPKINS (CHOREOGRAPHY) After living in NYC for several years, working as a performer on everything from original plays to a national tour, she now calls the DC theatre community her home. There she has been fortunate to work with several award-winning companies including The Folger, Constellation, Rorschach, Taffety Punk, Longacre Lea, Keegan, and We Happy Few. In addition she has been an educator both in the US and abroad teaching Shakespeare and Musical Theatre workshops to students at Cambridge University in England, and as a founding instructor of The Berridge Conservatory in Normandy, France. Her direction and choreography credits include fourteen shows over six summers with Festival 56 in Illinois, five shows for Providence College in Rhode Island, *Carrie* at Catholic University, three shows for George Washington University, two productions in Michigan and an award-winning production of *Mamma Mia!* for Ozark Actors Theatre in Missouri. Most recently she co-directed and choreographed *Merrily We Roll Along* at Keegan Theatre. Jennifer is currently an Adjunct Professor at George Washington University. Additionally, she serves as the Head of the Musical Theatre Department at the Metropolitan School of the Arts in Alexandria, VA. She holds a BFA in Musical Theatre from Webster Conservatory and an MFA from George Washington University and Shakespeare Theatre Company's Academy for Classical Acting.

PAULINE LAMB (PROPERTIES DESIGN) designs props, sets, and costumes throughout the DC area while also performing, choreographing, and teaching. She has a BA in Performance Studies from UNC Chapel Hill. Previous design credits include *Picasso* (GALA Hispanic Theatre (Props + Costumes), *The Hula Hoopin' Queen* at Imagination Stage, props); *Alice in Wonderland* (Chesapeake Shakespeare Company, props); and *Seussical*, *The Velveteen Rabbit*, *WinterFest*, and *The Little Mermaid* (Adventure Theatre, props + puppets); among others! Previous acting credits include Mama in *The Bluest Eye* (Theater Alliance), Daisy in *Diagnosed* (Creative Cauldron) Woman 2 in *From the Mississippi Delta* (The Essential Theatre), Simone in *Weep* (Nu Sass), and Sylvia in *Blight* (Pinky Swear Productions). Her choreography has been featured at Imagination Stage, 1st Stage, Pallas Theatre Collective, Adventure Theatre and varying schools through the DMV. She's thrilled to be back for her fourth show with her powerhouse 1st Stage family!

OLIVIA MARTIN (ASSISTANT DIRECTOR) could not be more delighted to be part of this magnificent production, their first time being 'in the room' at a professional theater! They are a director, designer, and dramaturg who recently graduated from Georgetown University with a B.A. in English and Psychology and a minor in Theater and Performance Studies. Some recent credits include *RENT*, *Our Dirty War*, and *One Flea Spare*, and you can often catch them working the box offices at Round House Theatre and Arena Stage. Enjoy the show!

NEIL MCFADDEN (SOUND DESIGN) Neil's sound designs have been heard in many area theatres over the last 37 years; these include Arena Stage, Studio Theatre, Woolly Mammoth, Olney Theatre, Adventure Theatre, Rep Stage, Longacre Lea, Everyman Theatre, Flying V (where he is a company member), Venus Theatre, and Round House Theatre (where he was the Resident Sound Designer and Sound Master for eleven years). An eleven-time nominee, Neil received the Helen Hayes Award for his design of Round House's *Heathen Valley*. He has designed several national tours and Off-Broadway productions. Neil is also a musician and composer: he has played in many area shows; he also performs with several rock/blues bands, and as a solo acoustic performer. Love to Elizabeth.

LORRAINE RESSEGGGER-SLONE (INTIMACY COORDINATOR,SHE/HER)Lorraine is always delighted to be working at 1st Stage. Theatre credits include: *How the Light Gets In*, *The Rainmaker*, *The Phlebotomist* (1st Stage); *Grounded* (Washington National Opera); *The Garden*, *How to Catch Creation* (Baltimore Center Stage); *Spring Awakening* (Round House Theatre); *Describe the Night*, *BLKS*, *Botticelli in the Fire*; Taffety Punk: *La Salpêtrière*, *Our Black Death*, *Pramkicker* (Woolly Mammoth).

The Production Team

JONATHAN DAHM ROBERTSON (SCENIC DESIGN, HE/HIM) DC AREA: *Look Both Ways* (Kennedy Center); *Passing Strange* (Signature Theatre); *Nollywood Dreams* (Round House Theatre); *Two Jews Walk into a War*, *The Christians* (Theater J); *The Agitators*, *Oh God!* (Mosaic Theater Co.); *The Mamaloes*, *Member of the Wedding*, *Broadway Bound* (1st Stage); *Day of Absence*, *Blood at the Root* (Theater Alliance); *Coolatully*, *The Frederick Douglass Project* (Solas Nua). REGIONAL: *Indecent* (American Stage); *Baskerville: A Sherlock Holmes Mystery*, *Footloose*, *the Sound of Music*, *Best Little Whorehouse in Texas*, *Murder for Two*, *One Slight Hitch*, *Jesus Christ Superstar*, and more (Totem Pole Playhouse); *Into the Woods* (The Barnstormers Theatre); *Wait Until Dark* (Cape Fear Regional Theater). OPERA: *Nixon in China*, *Fidelio*, *Peter Grimes* (The Princeton Festival); *Candide*, *Un Ballo En Maschera*, *Così Fan Tutte* (Opera in the Heights). AWARDS: Helen Hayes Nominee. www.jdahmrobertson.com @jdahmrobertson

ALBERTO SEGARRA (LIGHTING DESIGN) Credits include: *The Honey Trap* (Helen Hayes nomination, Solas Nuas); *Lend Me a Soprano* and *The Joy That Carries You* (Helen Hayes nomination, Olney Theatre Center); *Passing Strange* (Signature Theatre); *Blood at the Root* (Helen Hayes Award for Outstanding Lighting Design, Theater Alliance); *Look Both Way* (Helen Hayes nomination, The Kennedy Center); *The Great Leap* (Hangar Theatre Company/Portland Stage); and *The Three Musketeers* (Cleveland Play House). albertosegarracom.

KENDRA RAI (COSTUME DESIGN) received the Helen Hayes award for Outstanding Costume Design in 2012 for *The Green Bird* at Constellation Theatre, 2015 for *The Island of Dr. Moreau* at Synetic Theater, and in 2018 for *Or'* at Round House Theatre. In addition, she has been a nominee for the award ten times. Kendra's work has been seen all over the DMV at Olney Theatre Center, Signature Theatre, Round House Theatre, Adventure Theatre MTC, Opera Lafayette, Synetic Theater, Constellation Theatre, Theater J, Imagination Stage, UMD, and Catholic University. She is now so pleased to be working with and adding 1st Stage to her DMV credits! Kendra is a Princess Grace Honorarium recipient, and holds an MFA from Pennsylvania State University, and is currently the Head of Design at Virginia Commonwealth University (VCU), and has held teaching posts at Howard University, University of Pittsburgh and Gallaudet University. www.kendrarai.com

SARAH USARY (STAGE MANAGER, SHE/HER) is a stage manager based in northern Virginia. Previous credits—*Shutter Sisters*, *Quilters* (ASM), *The Chosen*, *The Last Match*, *The Member of the Wedding*, *Fly By Night*, *The Farnsworth Invention* (ASM), and *My Name is Asher Lev* (1st Stage); *Frankenstein*, *The Mountaintop*, *The Wolves*, *East of Eden* (NextStop Theatre Company); *She Kills Monsters* (Maryland Entertainment Group); *Assassins*, *Dracula* (Cumberland Theatre); *West Side Story* (SM), *Newsies*, *Mamma Mia!*, *Sweeney Todd*, *Little Shop of Horrors*, *My Fair Lady*, *The Pirates of Penzance* (ASM, Shenandoah Summer Music Theatre). Education—BFA Theatre Design and Production, Shenandoah University.

JOE WALSH (MUSIC DIRECTOR) is an accomplished conductor and music director, having recently served as music director for *The Pirates of Penzance* at Riverside Dinner Theater and *Master Class* and *Christmas at the Old Bull and Bush* at Metro Stage. He has been music director with the *In Series* in Washington D.C. as well as conductor at the Amalfi Coast Music Festival for five summers. Joe is Associate Professor of Music and Theater at George Mason University where he recently served as music director for *9 to 5*, *Head Over Heels*, *Footloose*, *Rags* and conducted opera productions, including *La Bohème*, *The Marriage of Figaro* and *The Magic Flute*. Joe was involved in the musical preparation of more than 65 productions at Virginia Opera, where he served for 17 years. He has been music director at The Delaware Children's Theatre and Three Little Bakers Dinner Theatre in Wilmington, Delaware. Joe is an active recitalist, accompanying both classical voice recitals and Broadway cabarets. He is thrilled to be music director for this production of *The Nance* at 1st Stage.



Thank you to Fiore Montessori and our Learning and Engagement Facilitators for their work in building a theatre program partnership between 1st Stage and Fiore!

The Production Team

ALEX LEVY (ARTISTIC/ EXECUTIVE DIRECTOR, HE/HIM) Alex has been Artistic Director of 1st Stage since 2014. His 1st Stage directing credits include *The Chosen* (2024 Helen Hayes nomination for “Outstanding Director”), *The Last Match* (2024 Helen Hayes Nomination for “Outstanding Production”), *How the Light Gets In* (2024 Helen Hayes nomination for “Outstanding Director” and “Outstanding Production”), *The Phlebotomist*, *Secret Things*, *Trying*, *columbinus* (2020 Helen Hayes Nomination for “Outstanding Director”), the American premiere of *Hero’s Welcome*, the world premiere of *Swimming with Whales* (2019 Helen Hayes nomination for “Outstanding Director” and “Outstanding Production”), *The Farnsworth Invention* (2019 Helen Hayes nomination for “Outstanding Director” and “Outstanding Production”), *Jesus Hopped the ‘A’ Train* (winner of 2 HH Awards and The BroadwayWorld Award for “Outstanding Production of a Play”), the regional premiere of *Trevor* (2018 Helen Hayes nomination for “Outstanding Production of a Play”), *Lobby Hero* (named Best Regional Revival of 2016 by *The Wall Street Journal*), *Proof*, *The Good Counselor* (BroadwayWorld DC Award for “Best Director of a Play”). Since Alex joined 1st Stage, the company has won several awards including the American Theatre Wing’s “National Theatre Company Grant” and was named “One of America’s most impressive smaller theater companies” by *The Wall Street Journal*. In addition, the company has won or been nominated for the Helen Hayes Award for “Outstanding Production” ten times. Alex holds an MFA in Directing from The University of California-Los Angeles.

DEIDRA LAWAN STARNES (ASSOCIATE ARTISTIC DIRECTOR, SHE/HER) is a learning facilitator, performer, writer, and director. Her last 1st Stage directing project, *Quilters* was nominated for Most Outstanding Ensemble. Her production, *The Rainmaker* was nominated for a 2023 Helen Hayes Award for Most Outstanding Production. Other directing credits include *Sunset Baby*, *Ma Rainey’s Black Bottom* (nominated for six Helen Hayes awards), *Night, Mother*, *A Civil War Christmas*, *For Colored Girls*, and *The Soul Collector*. Acting credits include *Shutter Sisters*, *The Hula Hoopin’ Queen*, *Mlima’s Tale*, *The Mamalogues*, *Passing Strange*, *Two Trains Running*, *Radio Golf*, *Seven Guitars*, *The Amen Corner*, *King Lear*, *Amadeus*, *Milk Like Sugar*, *Julius Caesar*, *Invisible Man*, and *Intimate Apparel*. She has a BA in Theatre from the UMD, an MA in Producing Film, TV, and Video from AU, and an MFA in Drama from UCONN.

Musicians

Led by Music Director Joe Walsh on Piano
Dana Gardner- Reeds
Anthony Dass- Trumpet
Jim Hofmann- Drums
Cyndy Elliott- Bass

Next at 1st Stage



Postcards from Ihatov, June 6 to 23, 2024
Created and directed by Natsu Onoda Power.
WORLD PREMIERE

Adapted from the works of Kenji Miyazawa including the classic “Night on the Galactic Railroad.” This spellbinding tale of friendship, self-discovery, and the transcendent power of imagination takes audiences on a cosmic journey through the stars. This world premiere production of visual theater is bursting with imagination and spectacle that the whole family can enjoy.

A SPECIAL THANK YOU
TO THE PRODUCER OF

The Nance

**SANDY LAESER
IN HONOR OF DICK LAESER**

Life is full of surprises!
Surprises are what help me
live my best life and enjoy time
that is flying by. Most of my
most cherished surprises are
related to live theatre.



Dick and Sandy's Beautiful Family

I went to my first live theatre performance when I was in the 4th grade. My parents, Pearl and Charles Gindin, took me to see *Oklahoma* at the L.A. Philharmonic Auditorium located in downtown L.A. *Oklahoma* was one of the performances put on by the Los Angeles Civic Light Opera. We attended those performances until 1964 when the Auditorium closed and the beautiful Dorothy Chandler Pavilion and the Music Center opened. It was magical. Any chance I got, I went.

My love of live theatre continues today with my participation in 1st Stage. It not only presents excellent performances, it provides an intimate atmosphere where friends can meet and enjoy wonderful theatre, as well as make new friends through volunteering and being part of other production and theatre related activities. 1st Stage is family!!!

See *The Nance* at 1st Stage - you won't be disappointed.

BECOME A PRODUCER

Producerships give 1st Stage the foundation to take risks and offer the necessary resources to a production's creative team to realize their vision. It is a vital partnership that provides the opportunity to elevate the work to a higher level, bringing in the most talented artists and designers to create world-class theatre right here in Tysons.

**Interested in what it means to be a 1st Stage producer?
Contact Heidi Fortune Picker for details at heidifortune@1stStage.org**



JOURNEY
WITH
1ST STAGE
MAY 19TH

SUPPORT 1ST STAGE AT TABLE TO STAGE

YOUR TRAVEL ITINERARY

STOP 1: 5:30 pm

The evening begins with dinner parties across the area either at the homes of 1st Stage's supporters and volunteers or at a local restaurant. These intimate dinner parties encourage conversation between patrons and artists and allow our community to deepen our relationships with each other.

STOP 2 : 7:30 pm

Following dinner, all guests will meet together at The Sandlot at The Boro for an outdoor party with desserts, specialty drinks, and performances by the extraordinary artists that call 1st Stage home.

THANK YOU TO OUR INCREDIBLE PARTNERS

Tom Manteuffel and Margaret Sheeran | Jack Wilbern and Patricia Tetro
Doug and Diane Lovejoy | Jackie Cookston and Anne Nolan
Judith M. Jobbitt and Thomas Marshall | Elizabeth R. Benson
Bill Newman and Sheila Johnson | Howard and Elaine Forman | Dominique Callins
Matt Korn and Cindy Miller | Marty and John McGrane | Wilma Probst Levy
Julie Lansaw Warin and Joe Warin



REFRAME THE BORO®
WEALTH TYSONS



CLARITY NORTH
ITALIA

Seasons 52
FRESH GRILL | WINE BAR

Visit 1ststage.org/benefit to purchase a ticket and learn more about partnership opportunities.

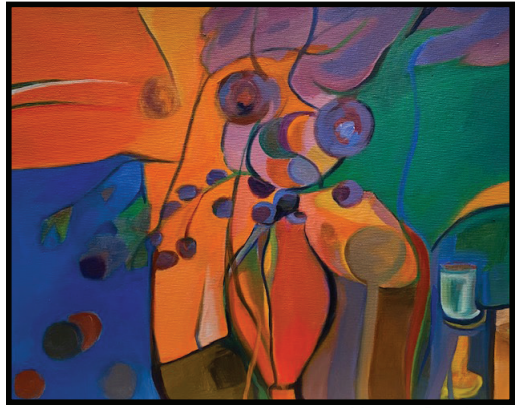


**Proud
to be an
ArtsFairfax
Grantee!**



In The Gallery

Almost Real Paintings by Irene Chambers



Almost Real, oil

I paint landscapes, still life, figurative, and abstract works. To my eye and in my mind, the paintings are very different from each other yet connected, springing from the same interests and responses. I paint in oils, watercolors, pastels, and mixed media. I enjoy painting rural and urban scenes. I love trees, shadows, the colors and shapes that both nature and people create. Many of my representational paintings try to capture the nature and beauty of the mountainous Appalachian landscape—its trees, shapes and ever-changing colors.

But there are times when abstract works, inspired and powered by events, feelings, and ideas, are my focus. For me abstraction, as I say often, is as natural as breathing.

Hans Hofmann, the famous teacher and artist, is supposed to have said that no matter what an artist paints, she always paints herself. If that is true, then this selection of works is part of me, my reality. They are from the last ten years and represent a small sampling of the range, size, mediums, and subjects of my paintings. In several senses of the term, they are "Almost Real."

MEET THE ARTIST RECEPTION: APRIL 14, 4:30 PM

GALLERY CURATOR: DEBORAH CONN, DEBORAHCONN@VERIZON.NET

THE KEEGAN THEATRE
in good company

APRIL 6-MAY 5, 2024

Webster's BITCH

a comedy by
**Jacqueline
Bircher**

WWW.KEEGANTHEATRE.COM
NEAR DUPONT CIRCLE AT 1742 CHURCH ST NW, DC



1st Stage is thrilled to offer free reusable menstrual products in all of our bathrooms, thanks to a generous donation from Days For Girls NOVA. www.facebook.com/daysforgirlsNOVA

NOW
OPEN

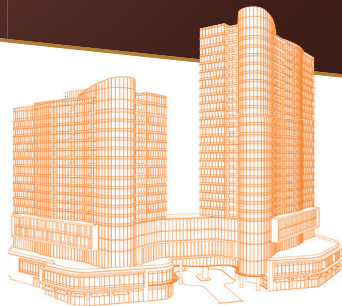
defy expectations.

DISCOVER LUXURY OF A DIFFERENT KIND

Introducing The Mather in Tysons, Virginia—
a forward-thinking destination for those 62
and better.

Forget what you thought you knew about
senior living. Inquire today.

(703) 348.8522 | themathertysons.com



the
mather®

Delight • Revel • Aspire



0924KC 15T

THANK YOU OUR DONORS

(March 29, 2023 - March 28, 2024)

Thank you to all who make our work possible.

\$30,000 and above

Elizabeth R. Benson
Sandy Laeser
Martha and John McGrane
Margaret Sheeran and
Tom Manteuffel
Jack Wilbern and
Patricia Tetro

\$15,000-\$29,999

Anonymous (2)
Jacqueline Cookston and
Anne Nolan
Howard and Elaine Forman
Bootsie and
Humo Humenansky
Eileen Mandell
Kathleen Gilles Seidel

\$10,000-\$14,999

Eleanor and
Richard Bochner
Matt Korn and Cindy Miller
Susan and Donald Levy

\$5,000-\$9,999

Marjorie and Scott George
Thomas Goodwin and
Cheryl Matheis
Gail and John Howell
Kathleen and
Anthony LaBarbera
Doug and Diane Lovejoy
William T. Newman Jr. and
Sheila C. Johnson
Doug and Diana Pinkham
Kay Rzasza and Deb Crierie
Adrienne and Ed Schmitz

\$2,500-\$4,999

Mary Ann Elliott
Judy Groner
Judy Jobbitt and
Thomas Marshall
Wilma Probst Levy
Adrian and Marcia Lund
Kathy Maher
Alan McAdams and
Ellen Dykes
Thomas Pierce and
Lu Ann Dillon
Rochelle Zohn

\$1,000-\$2,499

Anonymous
Paul and Nancy Allard
Lunette Arledge
Gene and Pam Bacher
Larry Baucom
Marilynn Bianco
Laura Bromberg and
Robert Martin
Carol Caparosa
Lori and Paul Carboneau
Barbara Carroll and
Jon Picker
Mark and Cynthia Carter
Robert Cookston
John L. and Patty A. Dyer
Mitch and Laurie Falter
Holly Hassett
Barbara Hawthorn
Robert Hebda
David Hindin and
Sally Bloomberg

Marty Hurwitz,
in memory of
Bonnie Hurwitz
Chidi and Faith James
Jane and Brad Kalbfeld
Renee Klish
Hannah and Chuck Lefton
Alex Levy
Nancy Limprecht and
Rick Haines
Wes MacAdam
Debbie Massey
Melissa and
Gene Nicholson
John Perry and Jeff Mintzer
Karen Pyeatt
Ray Saulino and
Debbie Cerulli
Jim and Beverly Seacord
Denny and Jan Towers
Janet and John Tysse
Juan Carlos Velazquez
Joseph Warin and
Julie Lansaw Warin
Paul and Katie Westpheling

\$500-\$999

Anonymous (2)
Donald Adams and
Ellen Maland
José Carrasquillo
Bonnie Carroll and
Roy Cooper
Phyllis Cela and Gary Sidell
Deborah Conn and
Howard Cincotta
Karen and Dan Duval
Bess and Eric Eisenstadt
Linda Gehr
Virginia Geoffrey and
John Andelin
Bob Guberman
Nancy Hopkins
Dr. Sari Hornstein
Judy Jaffe, in memory of
Larry Jaffe
Deborah Kahn
Bonnie Kawecki
James and Barbara Korman
Keith and Bari Livingston
Ann Makowski
Douglas Massey
Kathleen and Bernie Mihm
Daniel, Judith, and
Emily Mills
Marsha Mofson and
Jeff Dannick
Ronald and Ellen Neubauer
Katie Newland
Craig Pascal
David and Joy Peyton
Carol and Doug Powell
Jim and Sue Price
Jeffrey and
Daniele Robbins
Donna and
Mark Samblanet
Patricia Seale
Alan Shapiro and
Jaye Helferd
Steve Sibener and
Linda Young
Nigel and Linda Smyth

Richard Willing and
Jayne O'Donnell

\$250-\$499

Anonymous
Caren Anton
Michael and Lissa Barry
Scotty Benson
Shirley and
Dennis Bloomquist
Joan Botuck
Eric and Diana Chafetz
Susan Christie
Lisa and Bruce Cort
Liz and Tom Corwin
Jeffrey and Nellie Crigler
Stephen Cruze
Isabelle Cummings
Tim and Anna Donaldson
Charles and Eileen Duggan
Nancy Finken
Mark and
Diana Fredenburg
Jamie Gallagher
Gerald Gleason and
Naomi Robin
Stephen Gold and
Wini Atlas
Gail Gulliksen
Rita and David Gustin
Terrie Hauck
Lisa Hoskins
Lois Ireland and
Pierre Huggins
Debbie Jackson and
Bill Lammers
Sherry Joslin
Mike and Tara Levy
Warren and Barbara Lewis
Sonya Livingston
T. Michael Louden
Brenda Luwis
Margaret Lyle
Karen and John Mansfield
Linda Mazaway
Maureen and
Richard Mercier
Carl and Undine Nash
Phillip and Christine
Niedzielski-Eichner
Steve and Kathy O'Brien
Lynn O'Connell
Stan Peabody
Rebecca Perez
Norma Jean Reck
Mark and Ginni Richards
Laura and Neil Romstedt
Diane Rosacker
Estelle Schwalb
Dave and
Barbara Shepherd
Patricia and
Robert Silverman
Barry Sullivan and
Alan Scott
Stuart Teach
Igor and Donya Timofeyev
Margaret Tobey
Martha Trunk
Liz and Bob Weber
Christine and
Ken Westbrook
The Wille Family

\$100-\$249

Anonymous (11)
Mary Ann Allin
Tony Anikeeff
Rekha and Craig Arness
Cherie and Bill Artz
John and Patricia Ball
The Ballard Family
Marjorie Barclay
Bob Bartlett
Micheae Battles
Barbara Bear
Sheryl Beitsch and
Jerry Menchhoff
Bill and Fern Bekenstein
George and Gail Bergquist
Sue Ann and Ken Berlin
Alice Bidwell
Sheila Billingsley
John and Cindy Blakeley
Jaclyn and
Jack Blumenthal
Sandra Buratti
Michael Burke and
Carl Smith
Michael and
Napapan Carpenter
Diane Carroad
Sue and Dan Caulfield
The Chalmer Family
Robert Cheek
Barbara Cochran
Carolyn and Ladd Connell
Louise K. Crane
Janice Crawford
Linda DaRocha
Kim Dize
Alison Drucker and
Thomas Holzman
Amy and Bo Duma
Arlene Edwards
Angela and Chris Ehemann
Betsy and Kenyon Erickson
Uma Ferrell
Tom and Jenny Fortune
Dagne Fulcher
Judi Giannini
Laurie Goldberg
Nadja Golding
Sharon Goley
Betsy Goodman
Diane Gorman
Gabe Greene and
Mia Fiorella
Jonathan Groisser and
Hana Newcomb
Bob Gronenberg
Beate Guffee
Robert and Sally Hall
Carol Hamal
Jim and Julie Hamilton
Gayle Hardt
Laurence Hausman
Alan Helgerman
Yuki and
Richard Henninger
Greg and Joy Hildeman
Marie Himel and
John Butler
Bary Holt and
Julie Samuels
Miriam Howard
William and Debbi Iwig

THANK YOU OUR DONORS

(March 29, 2023 - March 28, 2024)

Thank you to all who make our work possible.

\$100-\$249 continued

Elizabeth Jablin
Audra Jacobs
Rainita Jain
Caleen and Carl Jennings
Peter Jessel
Jennifer E. Jones
Hilde Kahn
Caren Kamberg and
Michael Koscoff
Herschel Kanter
Bryan and Karen Kinsey
Peter Koenig and
Gloria Eaker
Katherine and
Robert Kroehler
Rae Kurasz
Linda and Harold Nevels
LuAnn and Len Levitt
Erik and Schana Levy
Roman and Beth Lewycky
Michael Lipsky and
Mariette Newcomb

Sailini and Sandeep Lohia
Chris Lovito
Dorothy Lyas
Judith Macon
Madison Productions
Donna and Marty Malarkey
Stella Matalas
Susan McCrackin and
Judy Yaggie
Sandy McKenzie
Gay Merrill
Janet Minkler
Lyn Moen
Kristin Moyer
Jasper Napoli
Mary Jo Offringa
Marc Okrand
Dell Pendergrast
Christie Phillips and
Robert Rothstein
Heidi and Ari Picker
James and
Susan Pittleman

Roz Rakoff
Ruth and John Raymer
Terri and Donald Rea
Paul and Mary Reistrup
Kevin and Stacy Reynolds
Victoria Robinson
Gay Rogers
Gail Rosner
Mary Rouvelas
Elise Ruedi
Carol Sakai
Carol Schrier-Polak and
Rudy Polak
Sandra and David Sellers
Beatrice and
Richard Shields
Stan Shulman
Susan and Sam Simon
Lucienne and
Henry Skopek
Mike and Leigh Sneed
Lisa Sockett and
Andrew Joskow

Jolanda Spata
Steven Spayd
Steve Spell
James Springer
Lloyd Starnes
Bonnie Steuart and
Don Taylor
Candace and
George Strawn
Mary Spanka
Linda Vogel
Andrea Wallen
Ken and Eleanor Wang
The Weingartner Family
Doris Weisman
Katherine White
Ted Williams
John Wilson
Matt and Sarah Wilson
Joey and Effie Wingate
Ben and Kaity Whitman
Janice and Paul Zucker

CORPORATE & FOUNDATION

American Theatre Wing ARTSFAIRFAX Arts Forward Fund Bazin's on Church Boeing Company BOWA Bright Funds Foundation bwd architects BDO Caplin Foundation Catalogue for Philanthropy Compass Pro Bono Clarity Circa Elderberry Cottages Company Ekko Title Five Star Bank Friends of the Tysons-Pimmit Library Exxon Mobil Foundation The Georgelas Group Goldman, Sachs and Co. Google, Inc.	Greenwich Group International Harris Design, Inc. HBC Group/KW India Hicks HMA Associates, Inc. International Monetary Fund Kositzka, Wicks and Company The Ruth and Hal Launders Charitable Trust The David and Reva Logan Foundation LS Technologies, LLC The Mather Tysons McLean Community Foundation The Meridian Group The Morgan Fund The Morningstar Foundation The National Endowment for the Arts The Neal Team North Italia Nostos Paul French Bakery & Café	Pillar to Post Pulcinella M. Raina Associates Rappaport Management Company RBC Wealth Management ReFrame Wealth The Reinsch Pierce Family Foundation The Revada Foundation The Ross Roberts Fund, The Community Foundation of Northern Virginia Royal Nepal Bistro Seasons 52 The Share Fund The Shubert Foundation The Sumac Foundation Summit Community Bank Sweet 120, LLC Virginia Commission for the Arts Walsh, Colucci, Lubeley and Walsh YourCause, LLC
---	--	--

In addition to offering **CAPTIONING** and **AUDIO DESCRIPTION** for selected performances throughout the season, **1st Stage** now offers **ASSISTIVE LISTENING DEVICES** for all performances.

CAPTIONED and AUDIO-DESCRIBED PERFORMANCES



Open Captioned Performances
All performances April 11-14

Audio Described Performance
April 14



ASSISTIVE LISTENING DEVICES

Assistive Listening Devices (ALDs) are available at every performance. Please request services at the box office when you check in.

Accessibility services are made possible through the generous support of the McLean Community Foundation and ARTSFAIRFAX.

THANK YOU OUR DONORS

(March 29, 2023 - March 28, 2024)

Thank you to all who make our work possible.

PRIME SQUARE FEET

"Prime Square Feet" are highly visible markers of your generous support for 1st Stage. To purchase "Prime Square Feet" in the theatre contact Heidi Fortune Picker at heidifortune@1stStage.org.

Office – Kate Levy

Lobby – Kathleen Gilles Seidel

Stage – LS Technologies LLC

Hallway Wall – Mark Krikstan

Hallway Wall – Deb Crierie

Hallway Wall – Jane Margulies Kalbfeld

Reception and Hallways

In Honor of Dick Laeser
In Memory of Steve A. Mandell
In Memory of Quin Mulcahy Kaweck
In Memory of Ben Saypol
ARTSFAIRFAX
Elizabeth Benson
John and Meg Hauge
Bootsie and Humo
bwdarchitects
Jacqueline Cookston
Patty Dyer
Elderberry Cottages Company
Howard and Elaine Forman
Friends of the Tysons-Pimmit Library
Theodore Gold and Margaret Gering
Toni Harrington and Ed Sumner
Harris Design, Inc.

Holly Hassett
Gail and John Howell
Thomas Goodwin and
Mary Cheryl Matheis
Lynne and Robert Ketcham
Wilma Probst Levy
Marcia and Adrian Lund
Matt Korn and Cindy Miller
Kathleen and Anthony LaBarbera
Susan and Donald Levy
Doug and Diane Lovejoy
Kathy Maher
Tom Manteuffel and
Margaret Sheeran
The Mather
Martha and John McGrane
McLean Community Foundation

The Morgan Fund of the
Seattle Foundation
The National Endowment for the Arts
Diana and Doug Pinkham
RBC Wealth Management
ReFrame Wealth
Reinsch Companies
The Reinsch Pierce Foundation
The Revada Foundation
The Share Fund
The Shubert Foundation
Linda Smyth
Virginia Commission for the Arts
Kathie and Paul Westpheling
Jack Wilbern and Patricia Tetro
Rochelle Zohn

Every effort has been made to ensure that donor lists are accurate. If you name is misspelled or omitted, please accept our apologies and inform 1st Stage at (703) 854-1856 or email the theatre at boxoffice@1stStage.org.



Deborah Ford Larson

Long and Foster Realtors

Specializing in Northern Virginia Properties since 1975

Also licensed in Sanibel and Captiva Islands, FL

CELL/TEXT: 703-966-9474

EMAIL: deborah.larson@longandfoster.com or sales@debbiehouses.com

Visit my website: www.debbiehouses.com It will make you smile!

1ST STAGE

BOARD OF DIRECTORS

Chair

Jack Wilbern

Secretary

Jacqueline A. Cookston

Treasurer

Tom Manteuffel

Elizabeth R. Benson

Dominique Callins

Mitchell Falter

Howard J. Forman

Chidi I. James

Judith Marshall Jobbitt

Anthony G. LaBarbera

Douglas C. Lovejoy

Martha B. McGrane

William T. Newman, Jr.

1st STAGE ARTISTIC ASSOCIATES

Debra Cerie - Designer

Kathryn Kawecki - Designer

Jessica Lefkow - Actor/Director

Kay Rzasa - Designer

Deidra LaWan Starnes - Actor/Director

Jacob Yeh - Actor

1st STAGE FOUNDING ARTISTIC DIRECTOR

Mark Krikstan

1st STAGE FOUNDING ARTISTS

Lucas Beck

Deb Cerie

Jane Margulies Kalbfeld

Nathaniel Krause

Alex Mandell

Peter Van Valkenburgh

David Winkler

Cheryl Patton Wu

SPECIAL THANKS FOR THEIR

ASSISTANCE WITH THIS PRODUCTION

Anacostia Playhouse
Theatre Department,
Montgomery College,
Rockville, MD

Shakespeare Theatre
Company

Ford's Theatre

Joe Chuckran

Melissa

and Gene Nicholson

Jake Null

John Perry

Jay Reiziss

Virginia Commonwealth
University, Costume Shop,
and Students

Debbie Berghahn

Erin Allen

Emily Cosma

Emily Anderson Mateos

Erik Mayes

Tallie Pugh

Alia Radabaugh

Eloise Rai

Mouse Schaub

Lucas Tober

Cate Wright

STAFF

Artistic/Executive Director

Alex Levy

Associate Producer

Emily Wall

Director of Engagement

Heidi Fortune Picker

Associate Artistic Director

Deidra LaWan Starnes

Director of Community Relations

Eileen Mandell

Casting Director Emeritus

Jane Margulies Kalbfeld

Web and Media Director

Robin Harris, Harris Design Inc.

Technical Director

Jack Beckey

Connectivity Director

Audra Jacobs

Seidel Fellow

Terrence Griffin

Box Office Associates

Sonia Hossain

Ruth Diaz

Learning and Engagement Facilitators

Gifty Amponsem

Caton Anton

Tamieka Chavis

Ruth Diaz

Ezinne Elele

Pauline Lamb

Mary Myers

Rocky Nunzio

Ben Ribler

Matthew Sparacino

TECHNICAL CREW

Lead Electrician

Lillian Moki

Electricians

Angela Armstrong

Alex Anthes Rojas

Christopher A. Muska

Carpenters

Zoe Tompkins

Eli Kern

Scenic Charge

Blake Mihm

Assistant Stage Manager

Emilie Knudsen

Wardrobe Crew

Delaney Crawford

Wig Designer

Sara Palmer

1st STAGE THEATRE

Architects

Butz-Wilbern, Ltd.

General Contractor

M. Raina Associates

1st
STAGE 

1524 Spring Hill Road
Tysons, VA 22102
1stStage.org • (703) 854-1856